



# DAWN SANDOVAL

*Residential*

1 Bedrooms

Apartment

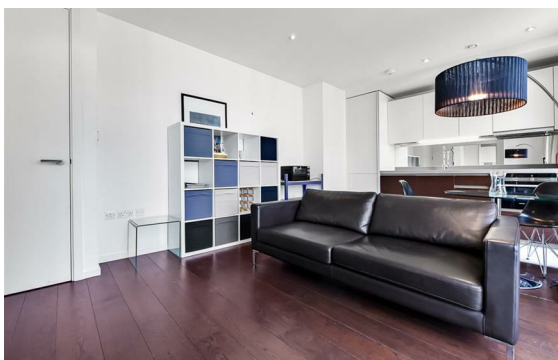
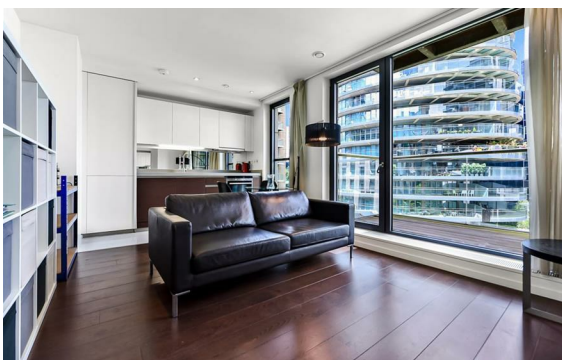
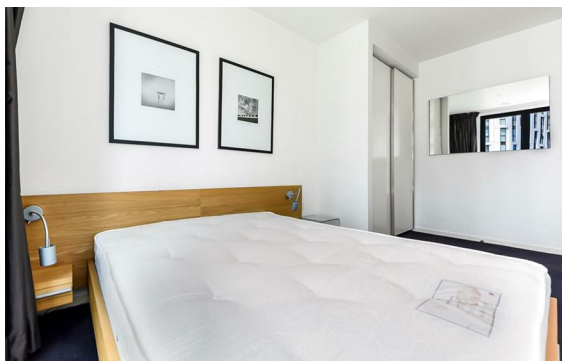
Located in London

£2,200 Per Month



[info@dawnsandovalresidential.co.uk](mailto:info@dawnsandovalresidential.co.uk) [www.dawnsandovalresidential.co.uk](http://www.dawnsandovalresidential.co.uk)

0207 093 1702



A stunning one bedroom apartment located on the 4th floor of this outstanding luxury development available to rent.

### Energy Efficiency Rating: C

Agents Note: Whilst every care has been taken to prepare these particulars, they are for guidance purposes only. All measurements are approximate and are for general guidance purposes only and whilst every care has been taken to ensure their accuracy, they should not be relied upon and potential buyers/tenants are advised to recheck the measurements.

**DAWN SANDOVAL**  
*Residential*

5 Indescon Square  
Lightermans Road  
London  
E14 9DQ

0207 093 1702

info@dawnsandovalresidential.

www.dawnsandovalresidential.co.uk